



## LH 无纸化会议系统 SERIES

产品型号 Product Model

LH-610M LH-617/627 LH-617C/LH-617D LH-627C/LH-627D LH-630M LH-690M  
LH-270M LH-24POE

# LH-610M

无纸化会议系统管理服务器

Paperless Conference System Management Server

LH SERIES



## 应用范围 Application

- ▶ 政府单位、企业事业单位、高级酒店、多媒体会议厅、多媒体教室、报告厅、培训室、各类指挥中心、管理中心、调度中心、大型系统工程、国际会议中心
- ▶ Government units, enterprises and institutions, hotels, Multimedia conference room, multimedia classroom, lecture hall, training room, All kinds of command center, management center, dispatch center, Large-scale Engineering projects, International Conference Centre

## 产品特性 Features

- ▶ 基于嵌入式开发，工业级服务器，提供稳定构造，低功耗环保节能，防尘、防震、防干扰；具有USB、VGA、AUDIO、HDMI及网口等各类会议接口；支持无人值守工作模式，可通过客户端或Web端登陆访问；网络构架，布线简单，方便调试维护。
- ▶ 智能无纸化会议系统文件管理服务器搭配智能会议软件对单个或多个会议室内的文件进行管理和分发，提高会议系统会务信息交互传输、管理和信息安全备份的能力。负责会议文件的处理，主要完成支持会议终端屏幕上的签到、投票表决、文件推送、文件同屏、文件浏览、文件批注、会议交流及记录查看等功能，会议过程文件可实时存储在智能无纸化会议文件管理服务器内部。
- ▶ Based on embedded development, industrial-grade servers provide a stable structure, low-power environmental protection, energy saving, dust-proof, shockproof, and anti-interference; With USB, VGA, AUDIO, HDMI and network ports and other types of meeting interface; Unattended working mode is supported, and login can be accessed through the client or Web. The network architecture is easy to configure and debug.
- ▶ The intelligent paperless conference system file management server, together with the intelligent conference software, manages and distributes files in single or multiple conference rooms, and enhances the ability of the conference system to exchange, manage, and securely back up the conference information. Responsible for the processing of conference documents, mainly to support the functions of attendance, voting, file pushing, file sharing, file browsing, document annotation, meeting communication, and record viewing on the terminal screen. The conference process files can be stored in real time in the intelligent paperless meeting document management server.

## 参数规格 Specifications

<b>处理器</b>	Intel 2.7GHz 主频	<b>Processor</b>	Intel 2.7GHz main frequency
<b>主板</b>	工业高性能主板	<b>Motherboard</b>	Industrial high-performance motherboards
<b>内存</b>	标配4G内存，可扩展32G	<b>Memory</b>	standard 4G memory, extensible to 32Gb
<b>RAID</b>	支持1/0/10/5/50/6/60级别，支持1GB/2GB/4GB缓存	<b>Raid</b>	support 1/0/10/5/50/6/60, 1GB/2GB/4GB cache
<b>硬盘存储</b>	500G，SATA 3.5英寸硬盘(7200转)	<b>Hard disk Storage</b>	500G, SATA 3.5-inch hard disk (7200 rpm)
<b>操作系统</b>	Windows	<b>Operating platform</b>	Windows
<b>网络接口</b>	1000兆网卡	<b>Network</b>	1000 megabit network card
<b>输入接口</b>	鼠标键盘、音频、USB	<b>Input interface</b>	mouse keyboard, audio, USB
<b>输出接口</b>	HDMI、VGA/DVI、音频、USB	<b>Output interface</b>	HDMI, VGA/DVI, Audio, USB
<b>工作电源</b>	100-240V AC	<b>Working power</b>	100-240V AC
<b>安装方式</b>	19" 标准机柜4U高度	<b>Installation</b>	19" standard cabinet 4U height
<b>尺寸(H×W×D)</b>	178×484×455mm	<b>Dimension(H×W×D)</b>	178×484×455mm
<b>重量</b>	12.3kg	<b>Net weight</b>	12.3kg

## 产品特性 Features

- ▶ 15.6寸超薄液晶屏升降器, 采用全铝外壳防撞击、防腐蚀阳极氧化, 防辐射。
  - ▶ 升降器的升、降、停止可以用升降器面板按钮、遥控器、中央控制器自由控制。
  - ▶ 升降器升到最高处后, 液晶显示屏会自动仰角15°。
  - ▶ 液晶显示屏下降后, 升降器会自动关门, 防夹手功能。
  - ▶ 当升降器上升或下降时, 显示屏自动接通电源或断开电源。
  - ▶ 升降器可以通过RS232、RS485通讯协议实现远程控制。
  - ▶ 网络构架, 布线简单, 方便调试维护。
  - ▶ 双显升降屏具有电子铭牌功能。
- ▶ 15.6 inch ultra-thin LCD lifting screen, using all-aluminum shell anti-impact, Anti-corrosion anodizing, radiation protection.
  - ▶ Hoist up, down, stop can be controlled freely with the elevator panel button, remote control, central controller.
  - ▶ When the hoist reaches the highest point, the LCD screen will automatically raise to 15°.
  - ▶ After the LCD screen drops, the hoist will automatically close the door, with anti-clamping function.
  - ▶ When the hoist goes up or down, the display automatically turns on or off the power.
  - ▶ Remote control can be realized by RS232 RS485 communication protocol.
  - ▶ Network structure, simple wiring, convenient debugging and maintenance.
  - ▶ Double display lifting screen with electronic nameplate function.



## 参数规格 Specifications

<b>屏幕控制</b>	电容式10点触摸屏	<b>Screen control</b>	Capacitive 10-point touch screen
<b>屏幕尺寸</b>	前屏15.6寸、后屏10.1寸(单显无后屏)	<b>Screen size</b>	front screen 15.6 inch, rear screen 10.1 inch
<b>屏幕分辨率</b>	前屏1920×1080、后屏1280×800		(single display without rear screen)
<b>屏幕比例</b>	16:9	<b>Screen resolution</b>	front screen 1920×1080, rear screen 1280×800
<b>屏幕类型</b>	FHD IPS	<b>Screen ratio</b>	16:9
<b>面板厚度</b>	5mm	<b>Screen type</b>	FHD IPS
<b>自动仰角</b>	15°	<b>Panel thickness</b>	5mm
<b>信号接入</b>	HDMI或VGA	<b>Automatic elevation</b>	15°
<b>控制接口</b>	RS485	<b>Signal access</b>	HDMI or VGA
<b>输入电源</b>	AC220V 50-60Hz	<b>Control interface</b>	RS485
<b>面板材质</b>	全铝合金	<b>Input power suppl</b>	AC220V 50-60Hz
<b>产品颜色</b>	银色或黑色	<b>Panel material</b>	full aluminum alloy
<b>面板(H×W×D)</b>	5×480×73mm	<b>Product color</b>	silver or black
<b>尺寸(L×W×H)</b>	550×412×68mm	<b>Panel size(H×W×D)</b>	5×480×73mm
		<b>Dimension(L×W×H)</b>	550×412×68mm

# LH-617C/LH-617D

无纸化带话筒触摸升降屏(单显)

Paperless With Microphone Touch Lifting Screen (Single Display)

**LH** SERIES



## 产品特性 Features

- ▶ 15.6寸超薄液晶屏升降器, 采用全铝外壳防撞击、防腐蚀阳极氧化, 防辐射。
  - ▶ 升降器的升、降、停止可以用升降器面板按钮、遥控器、中央控制器自由控制。
  - ▶ 升降器升到最高处后, 液晶显示屏会自动仰角15°。
  - ▶ 液晶显示屏下降后, 升降器会自动关门, 防夹手功能。
  - ▶ 当升降器上升或下降时, 显示屏自动接通电源或断开电源。
  - ▶ 升降器可以通过RS232、RS485通讯协议实现远程控制。
  - ▶ 网络构架, 布线简单, 方便调试维护。
  - ▶ 带话筒升降器, 主席单元具有优先发言、控制发言功能。
- ▶ 15.6 inch ultra-thin LCD lifting screen , using all-aluminum shell anti-impact, Anti-corrosion anodizing, radiation protection.
  - ▶ Hoist up, down, stop can be controlled freely with the elevator panel button, remote control, central controller.
  - ▶ When the hoist reaches the highest point, the LCD screen will automatically raise to 15 °.
  - ▶ After the LCD screen drops, the hoist will automatically close the door, with anti-clamping function.
  - ▶ When the hoist goes up or down, the display automatically turns on or off the power.
  - ▶ Remote control can be realized by RS232 RS485 communication protocol.
  - ▶ Network structure, simple wiring, convenient debugging and maintenance.
  - ▶ With microphone hoist, the chair unit has the priority to speak and can control who will give the speech.

## 参数规格 Specifications

<b>屏幕控制</b>	电容式10点触摸屏(单显)带升降会议话筒	<b>Screen control</b>	Condenser 10 point touch screen (single display) with lifting meeting microphone
<b>屏幕尺寸</b>	15.6寸	<b>Screen dimension</b>	15.6 inch
<b>屏幕分辨率</b>	1920×1080	<b>Screen resolution</b>	1920×1080
<b>屏幕比例</b>	16:9	<b>Screen ratio</b>	16:9
<b>屏幕类型</b>	FHD IPS	<b>Screen type</b>	FHD IPS
<b>面板厚度</b>	5mm	<b>Panel thickness</b>	5mm
<b>自动仰角</b>	15°	<b>Automatic elevation</b>	15 °
<b>信号接入</b>	HDMI或VGA	<b>Signal access</b>	HDMI or VGA
<b>控制接口</b>	RS485	<b>Control interface</b>	RS485
<b>输入电源</b>	AC220V 50-60Hz	<b>Input power supply</b>	AC220V 50-60Hz
<b>面板材质</b>	全铝合金	<b>Panel material</b>	full aluminum alloy
<b>产品颜色</b>	银色或黑色	<b>Product color</b>	Silver or Black
<b>面板(H×W×D)</b>	5×560×73mm	<b>Panel(H×W×D)</b>	5×560×73mm
<b>尺寸(L×W×H)</b>	662×540×68mm	<b>Dimension(L×W×H)</b>	662×540×68mm
<b>话筒灵敏度</b>	-50dB/Pa	<b>Microphone sensitivity</b>	-50dB/Pa
<b>话筒频率响应</b>	100Hz-12kHz	<b>Microphone frequency response</b>	100Hz-12kHz
<b>话筒信噪比</b>	70dB	<b>Microphone SNR</b>	70dB
<b>重量</b>	17.1kg	<b>Net weight</b>	17.1kg



### 产品特性 Features

- ▶ 15.6寸超薄液晶屏升降器，采用全铝外壳防撞击、防腐蚀阳极氧化，防辐射。
  - ▶ 升降器的升、降、停止可以用升降器面板按钮、遥控器、中央控制器自由控制。
  - ▶ 升降器升到最高处后，液晶显示屏会自动仰角15°。
  - ▶ 液晶显示屏下降后，升降器会自动关门，防夹手功能。
  - ▶ 当升降器上升或下降时，显示屏自动接通电源或断开电源。
  - ▶ 升降器可以通过RS232、RS485通讯协议实现远程控制。
  - ▶ 网络构架，布线简单，方便调试维护。
  - ▶ 带话筒升降器，主席单元具有优先发言、控制发言功能。
  - ▶ 双显升降屏具有电子铭牌功能。
- ▶ 15.6 inch ultra-thin LCD lifting screen , using all-aluminum shell,anti-impact, Anti-corrosive anodic oxidation, radiation protection.
  - ▶ Hoist up, down, stop can be controlled freely with the panel button, remote controller, central controller.
  - ▶ When the hoist reaches the highest point, the LCD screen will automatically raise to 15 °.
  - ▶ After the LCD screen drops, the hoist will automatically close the door, with anti-clamping function.
  - ▶ When the hoist goes up or down, the display automatically turns on or off the power.
  - ▶ Remote control can be realized by RS232, RS485 communication protocol.
  - ▶ Easy network structure, simple wiring, convenient debugging and maintenance.
  - ▶ With lifting microphone , the chair unit has priority to speak, with speech control function.
  - ▶ Double display lifting screen has electronic nameplate function.

### 参数规格 Specifications

<b>屏幕控制</b>	电容式10点触摸屏（双显）带升降会议话筒	<b>Screen control</b>	Condenser 10 point touch screen (Double Display) with lifting meeting microphone
<b>屏幕尺寸</b>	前屏15.6寸、后屏10.1寸	<b>Screen dimension</b>	front screen 15.6 inch, rear screen 10.1 inch
<b>屏幕分辨率</b>	前屏1920×1080、后屏1280×800	<b>Screen resolution</b>	front screen 1920×1080, rear screen 1280×800
<b>屏幕比例</b>	16:9	<b>Screen ratio</b>	16:9
<b>屏幕类型</b>	FHD IPS	<b>Screen type</b>	FHD IPS
<b>面板厚度</b>	5mm	<b>Panel thickness</b>	5mm
<b>自动仰角</b>	15°	<b>Automatic elevation</b>	15 °
<b>信号接入</b>	HDMI或VGA	<b>Signal access</b>	HDMI or VGA
<b>控制接口</b>	RS485	<b>Control interface</b>	RS485
<b>输入电源</b>	AC220V 50-60Hz	<b>Input power supply</b>	AC220V 50-60Hz
<b>面板材质</b>	全铝合金	<b>Panel material</b>	full aluminum alloy
<b>产品颜色</b>	银色或黑色	<b>Product color</b>	Silver or Black
<b>面板(H×W×D)</b>	5×560×73mm	<b>Panel(H×W×D)</b>	5×513×73mm
<b>尺寸(L×W×H)</b>	662×540×68mm	<b>Dimension(L×W×H)</b>	662×540×68mm
<b>话筒灵敏度</b>	-50dB/Pa	<b>Microphone sensitivity</b>	-50dB/Pa
<b>话筒频率响应</b>	100Hz-12kHz	<b>Microphone frequency response</b>	100Hz-12kHz
<b>话筒信噪比</b>	70dB	<b>Microphone SNR</b>	70dB
<b>重量</b>	17.5kg	<b>Net weight</b>	17.5kg

# LH-690M

无纸化会议终端

Paperless Conference Terminal

LH SERIES



## 产品特性 Features

- ▶支持会议文件智能推送功能，文件推送权限可设定，无权显示的会议终端自动屏蔽该文件显示；支持兼容常用办公软件与文件格式；支持会议签到、投票表决、交互式电子白板、电子铭牌显示、文件标注、会议交流、会议服务、会议通知等会议功能。
- ▶支持PPT文件动态播放，并支持CAD文件打开与编辑。
- ▶支持任何会议终端在任何界面下一键同屏；支持在同步画面共享时其它所有会议终端包括大屏幕同步显示文档的放大缩小等显示特性。
- ▶会议终端支持U盘内文件点击上传后自动分发到其他会议终端。
- ▶支持任何多媒体会议终端播放的视频文件同步到其他会议终端与大屏幕或只同屏到大屏幕显示。
- ▶异步浏览，任何有权限的会议终端支持一键切换完成信号的自由交互功能。
- ▶强制同步：启动强制同步后不论终端在任何界面下都强制回到主讲画面并不能退出。
- ▶跟踪主讲：处在异步浏览状态的会议终端支持一键同步到主讲此时的任何文件与视频画面并保持一致。
- ▶支持外部信号同屏到所有会议终端并同步显示。
- ▶支持主席有具备统一开启签到功能，支持统一开启投票表决功能，支持启动会议议题功能，主席机具备控制升降器统一上升与下降功能。
- ▶Support conference document intelligent push function, file push permission can be set, the conference terminal without right to display automatically shields the file display; support compatible common office software and file format; support meeting sign-in, voting, interactive whiteboard, electronic nameplate, document annotation, conference communication, conference services, meeting notices functions.
- ▶Support for dynamic playback of PPT files, and support for opening and editing CAD files.
- ▶Support any conference terminal under any interface with one button and the same screen; supports all other conference terminals including display characteristics such as zoom-in and zoom-out of large-screen synchronized display documents when the screen is shared.
- ▶Conference terminal support Udisk files click upload and automatically distribute to other conference terminals.
- ▶Support any multimedia conference terminal to play video files synchronized to other conference terminals and large screen or only to large screen display.
- ▶Asynchronous browsing, any authorized conference terminal supports the free interactive function of switching the complete signal by one button.
- ▶Forced synchronization: after starting forced synchronization, the terminal is forced to return to the main screen under any interface and it is not possible to exit.
- ▶Tracking presenter: a conference terminal in an asynchronous browsing state supports a one-click synchronization of any files and videos in the presentation and remains consistent.
- ▶Support for external signals on the same screen to all conference terminals and display synchronously.
- ▶The chairman support opening the check-in function, the voting function and starting the meeting, the chair machine has the function of controlling the hoist's rise and fall.

## 参数规格 Specifications

<b>处理器</b>	CPU双核2.5GHz主频	<b>Processor</b>	CPU dual core 2.5GHz main frequency
<b>内存</b>	4GB DD3	<b>Memory capacity</b>	4GB DD3
<b>硬盘存储</b>	32G SSD	<b>Hard disk capacity</b>	32GB SSD
<b>操作系统</b>	Windows	<b>Operating system</b>	Windows
<b>网络接口</b>	100M	<b>Network</b>	100m
<b>开机方式</b>	后台集中控制、面板开关按键	<b>Boot mode</b>	background centralized control, panel switch keys
<b>终端接口</b>	电源、网口、HDMI、VGA、USB、音频	<b>Terminal interface</b>	power supply, network interface HDMI, VGA, USB, audio
<b>供电方式</b>	适配器12V、5A	<b>Power supply</b>	adapter 12V 5A
<b>尺寸(H×W×D)</b>	57×220×200mm	<b>Dimension(H×W×D)</b>	57×220×200mm
<b>重量</b>	1.6kg	<b>Net weight</b>	1.6kg



## 产品特性 Features

- ▶ 支持与会场同步信号跟踪功能，当会场有同步信号时保持实时跟踪并同步输出到输出接口，当会场无同步信号时，输出接口无任何画面输出。
- ▶ 支持HDMI、VGA，任何终端画面通过此接口输出至大屏幕或其他信号显示设备。
- ▶ 支持HDMI信号输入，大屏幕显示的画面或者外部信号通过此接口实时广播画面到所有会议终端并同步显示。
- ▶ 支持信号格式自动转换功能，网络数据信号转换成数字信号，数字信号自动转换成网络信号传输。
- ▶ 支持对接远程视频会议终端、投影机、摄像机、视频矩阵、电视机等视频显示与处理设备。
- ▶ Support the tracking function of synchronous signal with the venue, keep real-time tracking and export to the output interface when there is synchronous signal, when there is no synchronous signal in the venue, the output interface has no picture output.
- ▶ Support HDMI, VGA, any terminal screen export to large screen or other signal display equipment through this interface.
- ▶ Support for HDMI input, large screen displays or external signals broadcast to all conference terminals in real time through this interface and display synchronously.
- ▶ Support signal format automatic conversion function, network data signal conversion to digital signal, digital signal automatically converted into network signal transmission.
- ▶ Support docking remote video conference terminal, projector, camera, video matrix, television and other video display and processing equipment.

## 参数规格 Specifications

硬件配置	工业级主板	Hardware configuration	Industrial motherboard
处理器CPU	I3四核2.7GHz主频	CPU	I3 quad-core 2.7GHz main frequency
内存容量	4GB DD3	Memory capacity	4GB DD3
硬盘容量	32G SSD	Hard disk capacity	32GB SSD
操作系统	Windows	Operating system	Windows
网络接口	1000M	Network interface	1000m
设备接口	电源、HDMI、VGA、USB、网口、音频	Equipment interface	power supply, HDMI, VGA, USB, network port, audio
视频输入	HDMI、VGA	Video input	HDMI、VGA
视频输出	HDMI、VGA、DVI	Video output	HDMI、VGA、DVI
输入电源	AC220V 50-60HZ	Input power supply	AC220V 50-60HZ
尺寸(H×W×D)	89×484×390mm	Dimension (H×W×D)	89×484×390mm
重量	7.1kg	Net weight	7.1kg

# LH-270M

网络电子桌牌

Network Electronic Nameplate

LH SERIES



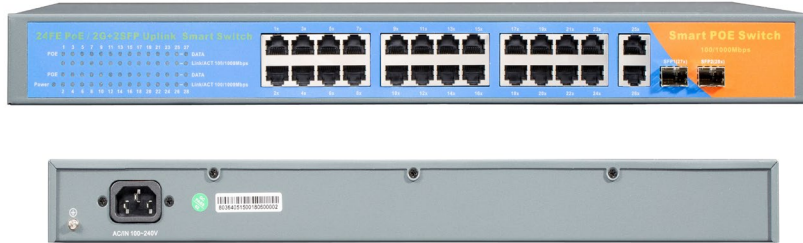
## 产品特性 Features

- ▶ 采用高清显示屏，双面7寸同步显示，异步显示，分辨率达到1024\*600。
- ▶ 支持智能换行，单位名称、参会名称、人员职位、LOGO背景图片等显示。
- ▶ 采用双网系统，同时支持有线网络与无线WIFI组网连接。
- ▶ 采用智能CPU高度集成，硬件稳定性更强。
- ▶ 可对参会者铭牌自由手写编辑姓名、职位、单位和背景。
- ▶ 支持后台电脑智能推送参会人员信息的双面显示。
- ▶ Use High-definition display screen, dual-sided 7-inch synchronous display, asynchronous display, resolution up to 1024\*600.
- ▶ Support intelligent line change, unit name, name of the participants, personnel positions, LOGO background pictures and so on.
- ▶ Double network system is adopted, and the wired network and wireless WiFi network connection are supported at the same time.
- ▶ The intelligent CPU is highly integrated, and the hardware stability is stronger.
- ▶ Free handwritten editor's name, position, unit and background for participants' nameplates.
- ▶ Support backstage computer intelligent push participants information display on both sides.

## 参数规格 Specifications

屏幕尺寸	7寸双面液晶屏	Screen size	7-inch double - sided LCD screen
触控技术	10点电容式	Touch technology	10 point condenser
分辨率	前屏1024×600，后屏800×480	Resolution	front screen 1024×600, rear screen 800*480
处理器CPU	四核1.4GHz	Processor CPU	quad-core 1.4GHz
内存容量	1G	Memory capacity	1 gigabyte
硬盘容量	8G	Hard disk capacity	8G
显示比例	16 : 10	The proportion:16	16:10
组网方式	有线RJ45/无线WIFI	Networking	wired RJ45 / wireless WiFi
供电方式	POE供电、适配器、电池(选配：三选一)	Power supply mode	POE power supply , adapter, battery(optional: one of three)
尺寸 (H×W×D)	117×176×68mm	Dimension(H×W×D)	117×176×68mm
重量	0.6kg	Net weight	0.6kg





## 产品特性 Features

- ▶ 24口网络交换机，其中1-24端口支持POE供电(24V)，一个1000M级联口和一个SFP光口级联口。
- ▶ 支持通过5类以太网线的无线访问点(AP)供电。
- ▶ 传输距离达100米。
- ▶ POE供电方式：线对4/5(+), 7/8(-)。
- ▶ 零配置特性，电源是自动供给到自适应的设备。
- ▶ 24-port network switch, Port 1-24 supports POE power (24V), a 1000M cascade port and a SFP optical-port cascade port.
- ▶ Support wireless access Point (AP) power over 5 types of Ethernet cables.
- ▶ Transmission distance up to 100m.
- ▶ Poe power supply: line pair 4/5(+), 7/8(-).
- ▶ Zero configuration features, power supply is automatically supplied to adaptive devices.

## 参数规格 Specifications

网络接口	10/100Mbps自动上连带PoE功能的RJ45端口 (端口1~端口24)
传输速度	100Mbps全双工, 10/100Mbps半双工
性能规范	带宽: 8.8Gbps (无阻塞) 网络延迟 (100 to 100M bps): 最大20 微秒 MAC地址容量: 1024
网络协议和标准兼容	IEEE 802.3 10BASE-T、IEEE 802.3u 100BASE-TX、IEEE 802.3ab 1000BASE-T、 IEEE 802.3z 1000BASE-X、IEEE 802.3af/at Power over Ethernet
LEDs 指示灯	系统电源, 每端口数据, PoE供电
电源支持	AC100-240V 50/60Hz
PoE总功率	250W(所有PoE端口, 端口1~端口24), 单端口最大30W
工作环境	工作温度: -10°~55°C, 无冷凝 工作湿度: 10%~90%, 无冷凝
尺寸 (H×W×D)	45×440×85mm
重量	2.9kg

Network interface	10/100Mbps, RJ45 port of automatic Joint POE function
Transmission speed	100Mbps full duplex, 10 or 100Mbps half duplex
Performance specification	bandwidth:8.8Gbps(no blocking), network latency(100 to 100 Mbps): maximum 20 microseconds, MAC address capacity:1024
Network protocol and standard compatibility	IEEE 802.3 10BASE-T、IEEE 802.3u 100BASE-TX、IEEE 802.3ab 1000BASE-T、 IEEE 802.3z 1000BASE-X、IEEE 802.3af/at Power over Ethernet
LEDs indicators	system power supply, Data per port, POE power supply
Power support	AC100-240V 50/60Hz
PoE total power	250W (all PoE ports, port1~port 24), single port max 30W
Operating environment	operating temperature: -10°~55°C, no condensation working humidity: 10%~90%, no condensation
Dimension (H×W×D)	45×440×85mm
Weight	2.9kg